



HOKKAIDO INTERNATIONAL FOUNDATION

# Summer 2022 (Online)

## The 36<sup>th</sup> Japanese Language and Japanese Culture Program

### June 13 – July 15, 2022 (5 weeks)

*This summer course will offer “project-based learning.” You will build various types of communities, while meeting new people online and learning from each other through the class projects. No textbook will be used.*

NOTE: All the dates and times mentioned in this document are based on Eastern Standard Time (EST) or Eastern Daylight Time (EDT) unless otherwise stated.

### 1. PROGRAM SLOGAN & OBJECTIVES

SLOGAN: えがお たっせいかん 笑顔と達成感 **“Smile and a Sense of Achievement”**

- OBJECTIVES:
- Retain, brush up, or improve Japanese language proficiency
  - Accumulate cultural and social knowledge
  - Build various types of communities
  - Contribute to people and city
  - Pursue a career or academic path



### 2. PROGRAM OVERVIEW

Japanese Language Class [4 hours/week]	Assignments for Self-study or Group-study
Office Hours	Language & Culture Exchange Class with “Local Supporters” [2 hours/week]
Japanese Language Table with “Local Supporters” [1 hour/week]	日本語だけルール Nihongo Dake Rule

#### “Local Supporters”

Local people of various generations who are happy to share their interests, opinions, and daily lives with you. They are also interested in learning from you!



#### “Nihongo Dake Rule”

All participants observe the Nihongo-Dake (Japanese only) rule from the moment they enter a Zoom meeting.

### 3. PROGRAM SCHEDULE

Date	Time (EDT)	
June 2 (Thu) June 3 (Fri)	9:00PM-10:00PM	Orientation & Level Check Test
June 13 (Mon)	9:00PM-10:00PM	Opening Ceremony
June 14 (Tue)	11:00AM	Class starts
July 15 (Fri)	11:00PM	Class and Closing Ceremony end

Participants are required to take a level check test before the program begins.

### 4. COURSE DESCRIPTIONS

#### <Course Materials>

Authentic materials, discussion, human interaction

No specific textbook is used.

#### <Classes>

2 classes will be offered. Class size is kept to about 10 students. If any class has insufficient enrollment (7 students and fewer), the class will be cancelled.



	Class 五稜郭 (Goryokaku)	Class 函館山 (Hakodateyama)
Type	Module structure based	Project based
Target	Novice-High level and higher Those who have completed a first-year JPN course (Ex. Genki I)	Intermediate and advanced levels Those who have completed at least the elementary level of JPN courses (Ex. Genki II)
Objectives	<ul style="list-style-type: none"> <li>- Acquire grammatical knowledge, language proficiency, and communication skills in a class setting.</li> <li>- Apply learning to practice.</li> </ul>	<ul style="list-style-type: none"> <li>- Improve grammatical knowledge, language proficiency, and communication skills through projects.</li> <li>- Apply learning to practice.</li> </ul>
Possible Topics (subject to change)	<ul style="list-style-type: none"> <li>- 食文化・料理 (food culture, cooking)</li> <li>- 地域探求 (city exploration)</li> <li>- ゆるキャラ (yuru-chara, literally, loose or laid-back mascot characters)</li> <li>- 振り返り・成長・達成感 (self-reflection, growth, a sense of achievement)</li> </ul>	<ul style="list-style-type: none"> <li>- 食文化・料理 (food culture, cooking)</li> <li>- 地域おこし (city revitalization)</li> <li>- ゆるキャラ (yuru-chara, literally, loose or laid-back mascot characters)</li> <li>- 振り返り・成長・達成感 (self-reflection, growth, a sense of achievement)</li> </ul>

## <Weekly Schedule>

EDT (JST)	11:00AM-1:00PM (0:00AM-2:00AM, + 1 day)	9:00PM-11:00PM (10:00AM-12:00PM, + 1 day)
Mon	Assignments due Tuesday	Office hours
Tue	<b><u>JAPANESE LANGUAGE CLASS</u></b> <b>Mandatory</b> , Delivered from the U.S. by Japanese language instructors	<b><u>JAPANESE LANGUAGE TABLE</u></b> <b>Optional</b> , Delivered from Hakodate by HIF staff, Local Supporters
Wed	Assignments due Thursday	Office hours
Thu	<b><u>JAPANESE LANGUAGE CLASS</u></b> <b>Mandatory</b> , Delivered from the U.S. by Japanese language instructors	Assignments/preparation for Friday's class
Fri	Assignments (weekly reflection)	<b><u>LANGUAGE &amp; CULTURE EXCHANGE CLASS</u></b> <b>Mandatory</b> , Delivered from Hakodate by HIF staff, Japanese language instructors, Local Supporters
Sat		
Sun		

Office hours are available during the drop-in hours or by appointment, through text, audio, or video, with a Japanese language instructor or HIF staff member.

### You are encouraged to apply if you are the type of student who...

- would like to enhance your Japanese language proficiency during summer.
- would like to experience the culture in Hakodate, a city that was ranked Japan's most attractive tourist destination six times since 2009 (The Local Brand Survey).
- would like to interact with local people in Hakodate.
- would like to learn Japanese language and culture through interaction with other participants who are from different universities.
- would like to learn Japanese language through authentic materials and interaction with local people, not through textbooks.
- is highly motivated.
- would like to contribute to someone or something.
- has completed the Japanese Language and Japanese Culture Program before, and would like to learn more about Hakodate.

## <Hakodate Quest and Certification>

### Hakodate Quest

Participants will virtually explore Hakodate with collecting items related to the city. By engaging in this gamification-based activity, they visually check their progress during the program and get to know Hakodate.



## Main Quest

The starting point is the Hakodate Airport. They can move forward to a next step by completing a mandatory activity such as the Japanese language class. The goal of the main quest is to get to the top of Mt. Hakodate. They will be titled “Hakodate Ambassador,” “HIF Ambassador,” “Hakodate Lover,” or “Hakodate Visitor,” depending on their performance.

## Sub Quest

They choose one of the themes such as "Souvenir from Hakodate," "Historical People in Hakodate," or "Sushi." They can earn a randomly chosen item from their theme by engaging in an optional activity or task. According to the number of the items they earned, they will be ranked as “名人王 (*meijin-ō*, Prime Master),” “名人 (*meijin*, Master),” or “特待生 (*tokutaisei*, Apprentice).”



## Certification

When completing the program successfully, participants will be awarded the two things:

1. 修了証 (a certificate of completion)
2. HIF 函館アンバサダー (a certificate of HIF Hakodate Ambassador)

A transcript will be issued upon request. If you need one for your credit transfer, please contact HIF.

## 5. FACULTY

Title	Name	Affiliation
Executive Program Advisor	Osamu Kamada	Nanzan University
Program Advisor	Katsuhiro Ito	Tokyo University of Foreign Studies
Academic Coordinator	Yoshimi Sakakibara	University of Michigan
Instructors	Highly experienced instructors from Japan and overseas	

## 6. ELIGIBLE APPLICANTS

- Applicants should be enrolled at an institution of higher education in an undergraduate, graduate or postgraduate course. Professionals or graduates with at least a bachelor's degree are invited to apply.
- Applicants should have studied **at least the first year of Japanese (e.g., completed the textbook “Genki 1”)** at any appropriate institutions, and have attained a proficiency of higher than Novice-Mid as outlined in [the ACTFL proficiency guidelines](#).
- Applicants should be willing to abide by the program's regulations. They should also be able and willing to adapt to new situations with social and cross-cultural sensitivity.
- Applicants should be able to participate in the program for the full duration and be committed to an intensive Japanese language and Japanese culture study program.
- HIF Alumni are also eligible to apply.

Please note that the above conditions are negotiable only in exceptional cases.

## 7. APPLICATION

---

### <Application Schedule>

Application Deadline: **March 21, 2022**

Screening Results Announcement: **By April 5, 2022**

- Accepted students must confirm their participation within 3 days after the screening results announcement, by sending a message to [jj@hif.or.jp](mailto:jj@hif.or.jp) along with an "HIF Pledge Card."
- Applications will remain open until enrollment fills.

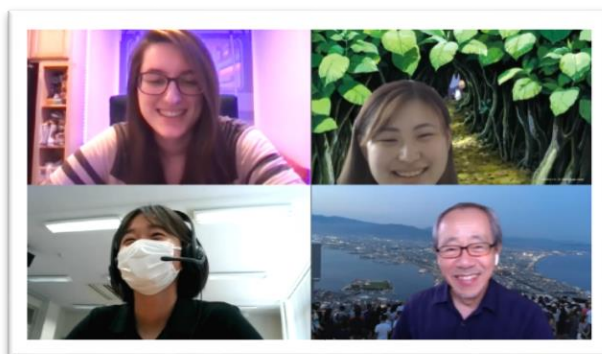
### <Application Fee>

Regular: US\$60 (By March 21, 2022)

Late: US\$90 (On and after March 22, 2022)

Application fees are non-refundable.

Please make a payment via PayPal.



### <Application Documents & Procedures>

- Online Registration Form
- Statement of Purpose
- Transcript
- Letter to "Local Supporters"
- Consent Form
- HIF Reference Form (to be completed by the applicant's current or most recent instructor of Japanese)  
This form should be directly sent to HIF ([jj@hif.or.jp](mailto:jj@hif.or.jp)) by a referee.

All of the forms, except for f) HIF Reference Form, must be submitted through [the HIF Online Application Portal](#).

## 8. TUITION

---

**US\$ 1,000**

Payment Deadline: April 15, 2022

Payment Method: Bank transfer or PayPal

### <Bank Information>

Currency: US dollars

Method: Bank transfer

HIF does not send you a payment invoice. Please remit your fees to the North Pacific Bank.

Bank Name	NORTH PACIFIC BANK, LTD.
SWIFT (BIC) Code	NORPJPJP
Branch Name	HAKODATE-CHUO BRANCH
Branch Code	321
Beneficiary's Account No.	321-004390
Beneficiary's Name	HOKKAIDO INTERNATIONAL FOUNDATION
Beneficiary's Address	14-1 MOTOMACHI, HAKODATE, HOKKAIDO 040-0054 JAPAN
Beneficiary's Tel No.	81-138-22-0770



Notes:

- All bank charges and fees are to be paid by the applicant. If any extra fees are deducted in the process of transferring funds between banks, please pay the balance to HIF via PayPal.
- To facilitate accurate confirmation of your payment, please make sure you send the remittance in your name or add your name as a note on the transfer form.
- If you have to remit your fee in other currencies including Japanese yen, please contact HIF for instruction.

### <PayPal: Payment Button>

[https://www.paypal.com/cgi-bin/webscr?cmd=\\_s-xclick&hosted\\_button\\_id=KYHK7B4KWVG94](https://www.paypal.com/cgi-bin/webscr?cmd=_s-xclick&hosted_button_id=KYHK7B4KWVG94)

### <Cancellation Policy>

If an applicant withdraws from the program prior to April 15, 2022, the total tuition will be refunded. For withdrawals on or after April 15, 2022, HIF will refund the total paid amount, less the cancellation fees stated below. Applicants who wish to withdraw must inform HIF by e-mail. The refund will be made via PayPal. HIF will offer no tuition refunds for cancellations made on or after Monday, June 13, 2022 (00:00 EDT).

Date of Cancellation Notice (Eastern Daylight Time)	Cancellation Fee
April 15, 2022 (00:00) – April 30, 2022 (23:59)	US\$100
May 1, 2022 (00:00) – May 31, 2022 (23:59)	US\$200
June 1, 2022 (00:00) – June 12, 2022 (23:59)	US\$300
On and after June 13, 2022 (00:00)	US\$1,000

## 9. OTHER

### <Financial Aid>

HIF does not provide financial assistance or scholarships for tuition or other expenses. Your home institution may provide financial assistance. Please contact your study-abroad program director for further information.

### <Academic Credits>

Participants who satisfactorily complete the Japanese Language and Japanese Culture Program will receive certificates of completion. Grade transcripts will be issued upon request. Although HIF is not an institution accredited by the Japanese Ministry of Education and Science, many universities in the U.S. have

recognized the quality of the Japanese Language and Japanese Culture Program (established in 1985), giving their students credits equivalent to their own Japanese program. Participants are encouraged to consult their academic dean to find out if it is possible to transfer credits to their home institutions.



### <Equipment & Environment Requirements for Online Courses>

You will need a relatively quiet space, a computer, high-speed internet access, a microphone, a web cam, and headphones.

## Please join our Online Information Session!

	Target	Language	Date	Time
#1	Faculty	Japanese	Friday, November 19, 2021	8PM-9PM (EST)
#2	Students & Faculty	English (& Japanese)	Friday, December 17, 2021	
#3			Thursday, January 13, 2022	
#4			Friday, February 11, 2022	



### <Tentative schedule>

8:00-8:30	Explanation by HIF faculty & staff members
8:30-8:45	Q&A session (public)
8:45-9:00	Q&A session (individual)

Click [HERE](#) to register.

